



FOOD & BEVERAGE

WORKSHOPS & TRAINING PROGRAMS FOR PRIVATE CLUBS

ABOUT THIS OPPORTUNITY

Our programs grow passion and confidence through storytelling, sharing experiences, role playing, situational awareness exercises and more...

**DESIGNED FOR
DEPARTMENT
MANAGERS & TEAMS**

MAIN TOPICS

Hospitality 101

Product Knowledge

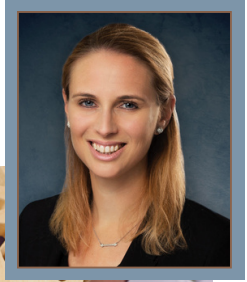
Team Player / Team Relations

Recognition, Empathy & Unscripted Care

Steps of Service

ANNETTE WHITTLEY

Food & Beverage Trainer and Consultant
Culinary Search Executive



**PEOPLE & TEAMS CELEBRATED
AS "THE BEST" WILL
TELL YOU THEY TRAINED
EVERY. SINGLE. DAY.**

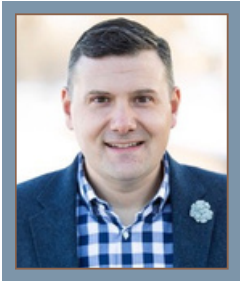
TESTIMONIALS

"When Edina Country Club decided to remodel the Club's restaurants and re-imagine our member dining experience, I called Annette to help guide us through the process. With her knowledge, wit, easy demeanor and understanding of their circumstances, Annette connected with everyone from teenage wait assistants to accomplished managers. Largely because of Annette's influence this was the smoothest opening I have been a part of in my 20-year career."

General Manager, Edina Country Club

"I just wanted to congratulate you on a very successful training week. You are extremely knowledgeable in your field and you disseminated the key points with clear, concrete examples. Through your stories and scenarios, I gleaned some important tips to improve my service and hospitality. Thank you for the incredible amount of time and preparation that you put into your presentation."

Bartender, Aronimink Golf Club



CHRIS DECHILLO

Trusted Partner
Food & Beverage Trainer and Consultant

☎ 561-827-1945 ✉ annette@kkandw.com 🌐 www.kkandw.com/annettewhittley

KOPPLIN KUEBLER & WALLACE

THE MOST TRUSTED NAME IN EXECUTIVE SEARCH AND CONSULTING